

**A**PPARECCHIATURE  
**E**ROGAZIONE  
**B**EVANDE



**Sede e stabilimento**

*Head office and factory*

**23014 ANDALO Valtellino (SO)**

Via Provinciale per Delebio, 2/b

**Uffici**

*Office*

**20871 VIMERCATE (MB)**

Via Pellizzari, 11

Tel. ++39 039 608 40 04

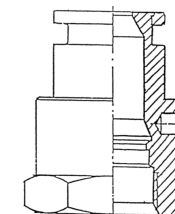
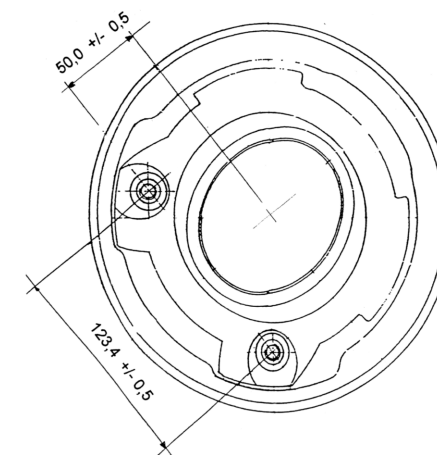
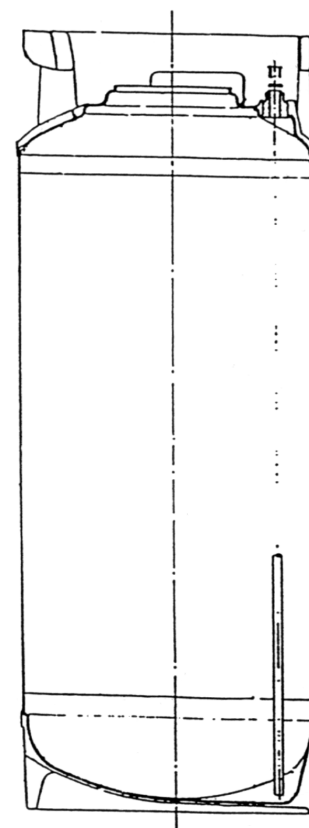
Fax ++39 039 608 46 94

Web site : [www.aebkegs.com](http://www.aebkegs.com)

E.-mail : [aeb.vimercate@aebkegs.com](mailto:aeb.vimercate@aebkegs.com)  
[aeb.vimercate@libero.it](mailto:aeb.vimercate@libero.it)



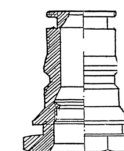
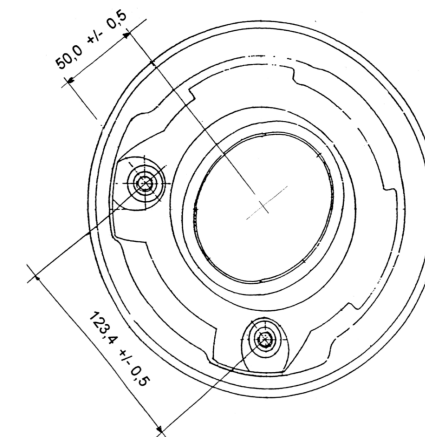
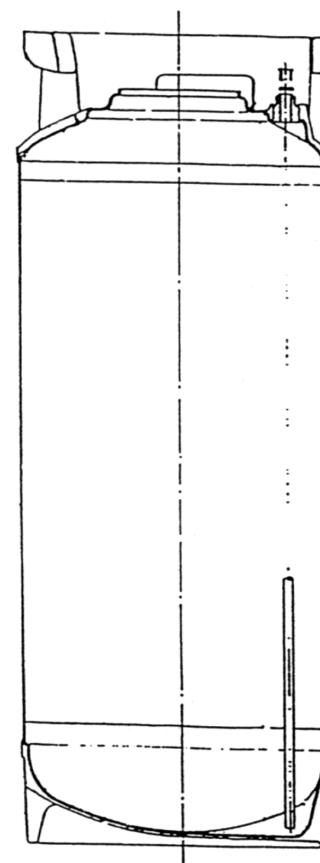
## Coca Cola (R-F)



Valve Type Coca Cola  
 Thread 9 / 16 " 18 UNF  
 2 Pins CO2 ( 3261 )  
 3 Pins Product ( 3262 )

Capacità / Capacity Inhalt / Capacité	Altezza totale / Total Height / Max. Höhe Hauteur total	Diametro max. esterno Outside diameter Außendurchmesser Diamètre extérieur	Peso / Weight Gewicht / Poids
9 L (Mini R)	340 ± 2 mm	232 ± 2 mm	3,500 ± 0,2 kg
18 L / 5 US Gal (R)	563,5 ± 2 mm	232 ± 2 mm	4,250 ± 0,2 kg
3 US Gal (Mini F)	389 ± 2 mm	232 ± 2 mm	3,700 ± 0,2 kg
5 US Gal (F)	589 ± 2 mm	232 ± 2 mm	4,350 ± 0,2 kg

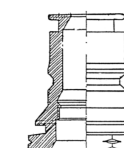
# R Jolly



Product ( 3064 )

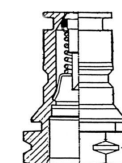
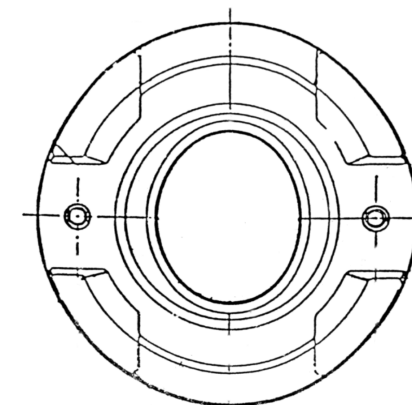
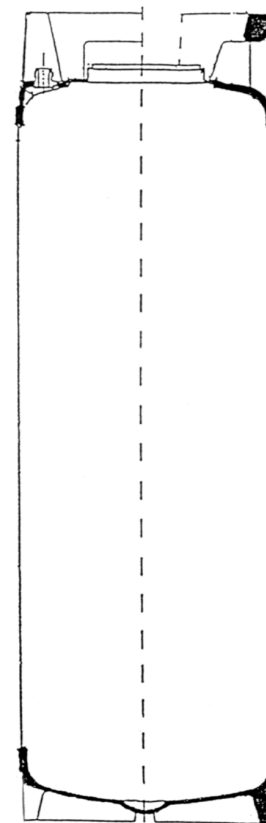
Valve Type JOLLY

Thread 9 / 16 " 18 U N F



CO2 ( 3063 )

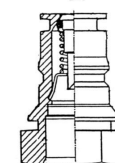
Capacità / Capacity Inhalt / Capacité	Altezza totale / Total Height / Max. Höhe Hauteur total	Diametro max. esterno Outside diameter Außendurchmesser Diamètre extérieur	Peso / Weight Gewicht / Poids
9 L	340 ± 2 mm	232 ± 2 mm	3,500 ± 0,2 kg
18 L	563,5 ± 2 mm	232 ± 2 mm	4,250 ± 0,2 kg
3 US Gallon	389 ± 2 mm	232 ± 2 mm	3,700 ± 0,2 kg

**NC**

CO2 ( 3263 )

Valve Type N C

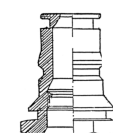
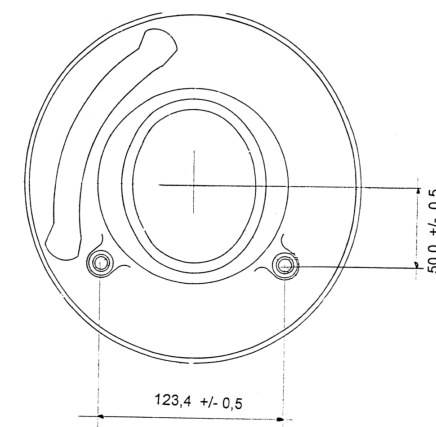
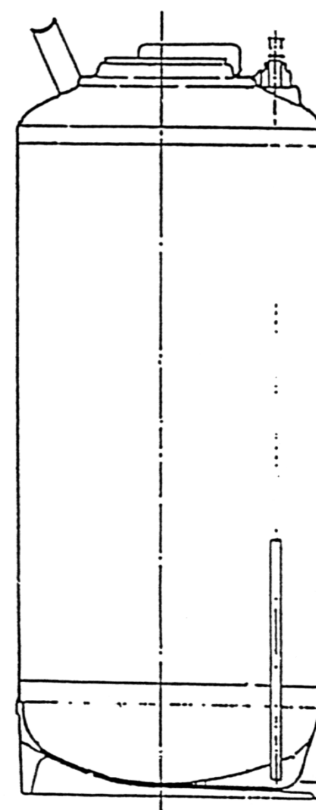
Thread 19 / 32 " 18 UNS



Product ( 3264 )

Capacità / Capacity Inhalt / Capacité	Altezza totale / Total Height / Max. Höhe Hauteur total	Diametro max. esterno Outside diameter Außendurchmesser Diamètre extérieur	Peso / Weight Gewicht / Poids
2,5 US Gallon	372 ± 2 mm	219 ± 2 mm	3,000 ± 0,2 kg
3 US Gallon	422 ± 2 mm	219 ± 2 mm	3,200 ± 0,2 kg
5 US Gallon	633 ± 2 mm	219 ± 2 mm	4,000 ± 0,2 kg

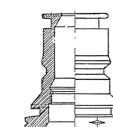
# Jolly



Product ( 3064 )

Valve Type JOLLY

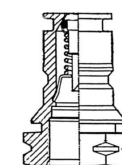
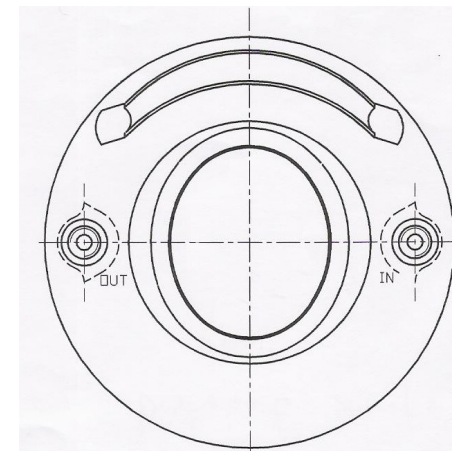
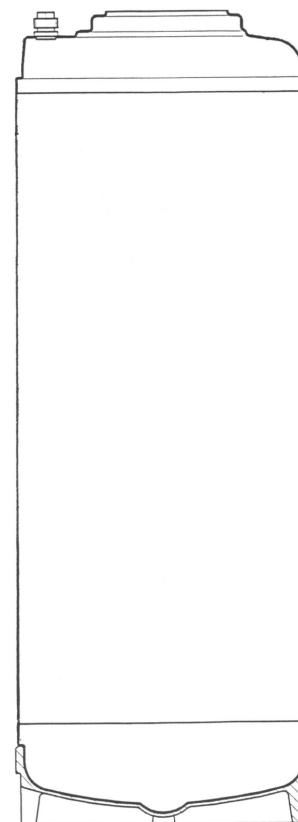
Thread 9 / 16 " 18 UNF



CO2 ( 3063 )

Capacità / Capacity Inhalt / Capacité	Altezza totale / Total Height / Max. Höhe Hauteur total	Diametro max. esterno Outside diameter Außendurchmesser Diamètre extérieur	Peso / Weight Gewicht / Poids
9 L	335 ± 2 mm	232 ± 2 mm	2,600 ± 0,2 kg
18 L	555 ± 2 mm	232 ± 2 mm	3,350 ± 0,2 kg

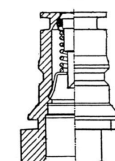


**NC** handle

CO2 ( 3263 )

Valve Type N C

Thread 19 / 32 " 18 UNS



Product ( 3264 )

Capacità / Capacity Inhalt / Capacité	Altezza totale / Total Height / Max. Höhe Hauteur total	Diametro max. esterno Outside diameter Außendurchmesser Diamètre extérieur	Peso / Weight Gewicht / Poids
2,5 US Gallon	372 ± 2 mm	219 ± 2 mm	2,450 ± 0,2 kg
3 US Gallon	422 ± 2 mm	219 ± 2 mm	2,600 ± 0,2 kg
5 US Gallon	633 ± 2 mm	219 ± 2 mm	3,400 ± 0,2 kg